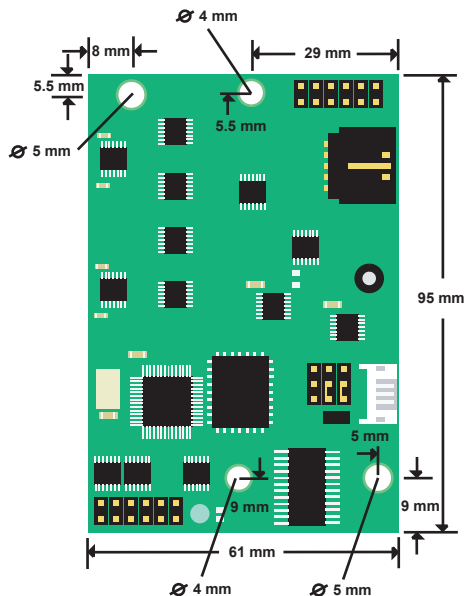


# TouchKit

## Capacitive Touch Panel Controller



### Dimensions



### Hardware Specifications

Power Requirements	+5VDC (max. 100mA, typical 90mA, 50mV peak to peak max ripple )
Operating Temperature	0 °C to 50 °C
Storage Temperature	-40 °C to 80 °C
Relative Humidity	95% at 60 °C
Protocol	1. RS232 Model: 9600 bauds, None parity, 8 data bits, 1 stop bit 2. USB Model: USB 1.1 Low speed
Resolution	2048 X 2048
Accuracy Tolerance	Max. +/- 0.5% tolerance
Report Rate	Max. 160 points/sec
Response Time	Max. 20 ms
Regulatory Approvals	FCC-B, CE
Pin Out Definition	UL, UR, COM, LR, LL

### Software Features

Calibration	Fast full oriental 4 points position
Compensation	1. Accuracy 25 points linearity compensation 2. Edge compensation
Draw Test	Position and linearity verification
Controller Setting	1. Support multiple controllers 2. Dynamical add/ remove controllers 3. Change controller interface without reboot
Languages	Support 10 languages for Windows
Mouse Emulator	1. Right/ left button emulation 2. Click/ drawing mode
Sound Notification	1. No sound 2. Touch down 3. Touch up
Double Click	1. Configurable double click speed 2. Configurable double click area
OS Support	1. Windows 95/ 98/ ME/ NT4/ 2000/ XP/ XP Tablet PC edition 2. Windows CE 2.12/ 3.0/ .net/ 5.0 3. Linux (up to Kernel 2.6) 4. MS-DOS: support display resolution: 320x200, 640x200, 640x350, 640x480, 800x600, 1024x768 and 1280x1024 5. iMac 9.0/ OS X
COM Port Support	1. Support COM1 ~ COM256 for Windows and Linux 2. Support COM1 ~ COM8 for DOS
Display Support	1. Support monitor/ display rotation 2. Support multiple monitors 3. Support split monitor